



**⚠ ATTENTION**

**READ** and **UNDERSTAND** all of the instructions and safety information in this manual before operating or servicing this tool.

Failure to read and understand these warnings and safe handling instructions could result in severe personal injury or death.

**KEEP THIS MANUAL WITH TOOL.**

Thank you for using Slingco® products. This manual must be read and understood prior to operating this product. Special attention should be paid to the section **'Safety Information'**.

This manual should be kept available to all operating and maintenance personnel.

Additional or replacement manuals may be obtained at no charge by contacting your local Slingco office.

## CONTENTS

SAFETY INFORMATION	3-4
DESCRIPTION/OPERATION	5-7
TRANSPORT	8 9

# SAFETY INFORMATION

## ATTENTION

**DO NOT** perform any service or maintenance on this tool other than described in this manual.

Read and follow the operator's manual before using this tool.

This manual should be kept available to all operating and maintenance personnel.

## **WARNING** PINCH POINT HAZARD



- Keep hands away from mechanism, or serious injury may occur.

## **WARNING** GLOVES REQUIRED



- **DO NOT** operate without proper hand protection.

## **WARNING**



Heavy suspended objects can fall. Can cause property damage, severe injury, or even death.

**DO NOT** stand under CatchBlock Twin.

## **WARNING**



Inadequate maintenance or improper use may lead to unexpected failure. Inspect often.

Can cause property damage, severe injury or death.

## **WARNING**



Risks can develop as a result of improper use and lead to death or severe injuries. Improper use compromises, among others:

- Exceeding technical values defined for normal mode.
- Using the system as deflection roller for lifting loads.
- Using the system as load lifting accessory for lifting an individual load.

## **WARNING**



### **Damage of ground wire due to defective CatchBlock**

If a defective CatchBlock is damaged and the pulled conductor touches the frame of the CatchBlock, the conductor could be damaged. Check CatchBlock for proper functioning prior to each use. Use only undamaged CatchBlock.

## SAFETY INFORMATION (CONT.)

### WORK AREA SAFETY

1. Keep the area around the equipment clean and free of obstruction.
2. Bystanders should stay clear of the work area to ensure safety.

### PERSONAL SAFETY

1. Stay alert while using the equipment to prevent serious injury. Do not use under the influence of drugs, alcohol or medications.
2. Do not wear loose hair or clothes that may get caught while the equipment is in operation.
3. Work safely. Ensure firm footing, be properly secured, and do not over-extend yourself while operating equipment.

### TOOL USE AND CARE

1. **DO NOT** use this tool if there are any abnormalities or damage to any of its components.
2. Inspect the tool before and after every use. Do not use this tool if it is damaged in any way. Ensure that all pins are secure.
3. When having the tool repaired, always use factory Slingco replacement parts. Tools must be serviced and/or repaired by Slingco or a factory authorized service center.

### PARTS LIST

ZSN7130	CatchBlock
ZSN09345	CatchBlock Connector
WAM10584	Tail Support Cable

## DESCRIPTION/OPERATION

### INTENDED USE

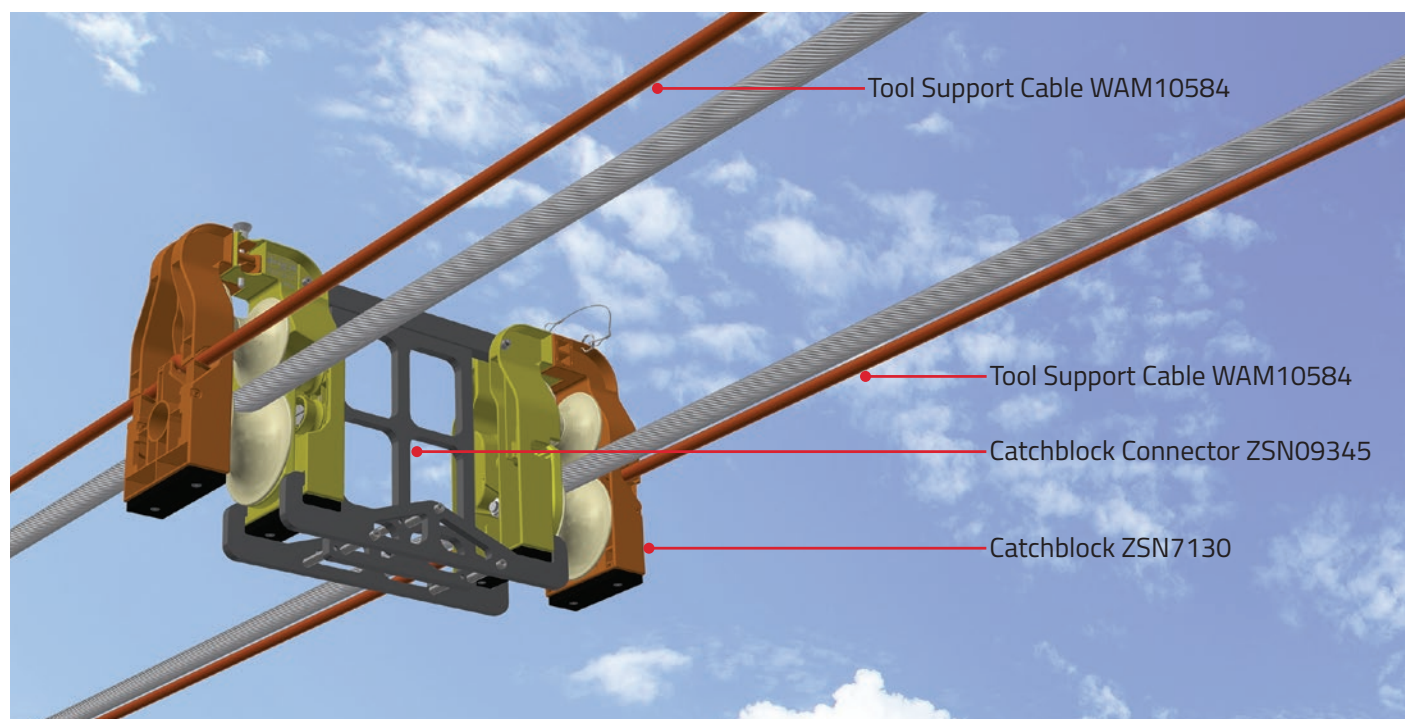
The CatchBlock is exclusively intended for replacing existing phase conductors as part of an OHL network. In certain circumstances they may be used in the proximity of live circuits and thus any local work practices/regulations must be adhered to.

Usage according to the intended use also comprises:

- Observance of all indications in this operating manual.
- Exclusive use of original parts.

### BUILD-UP OF THE CATCHBLOCK

The figure below shows the main components.



## DESCRIPTION/OPERATION (CONT.)

### FIELD OF APPLICATION

The CatchBlock unit is used to facilitate the safe exchange of old overhead line conductor with a new conductor. The exchange is made in four work steps:

- 1) Deployment of the Catchblock with an electric pulling robot/spacer trolley.
- 2) Tensioning the CatchBlock orange support ropes.
- 3) Installation of a new conductor through the cable pulleys of the CatchBlock.
- 4) Retrieval of the Catchblocks and support ropes

When deploying the CatchBlock, mount the CatchBlock on the conductor in such a way that the orange rope is retained in the roller cleat in the side of the orange chassis and the orange rope is retained in the hook grip on the side of the orange chassis.

### FUNCTION DESCRIPTION

#### CatchBlock on the conductor: Deployment

The schematic diagram below shows the CatchBlocks during the deployment.

Note: before commencing each line pull, the number of CatchBlocks used between the towers should be determined via load calculations completed by the contractor or their advisors.

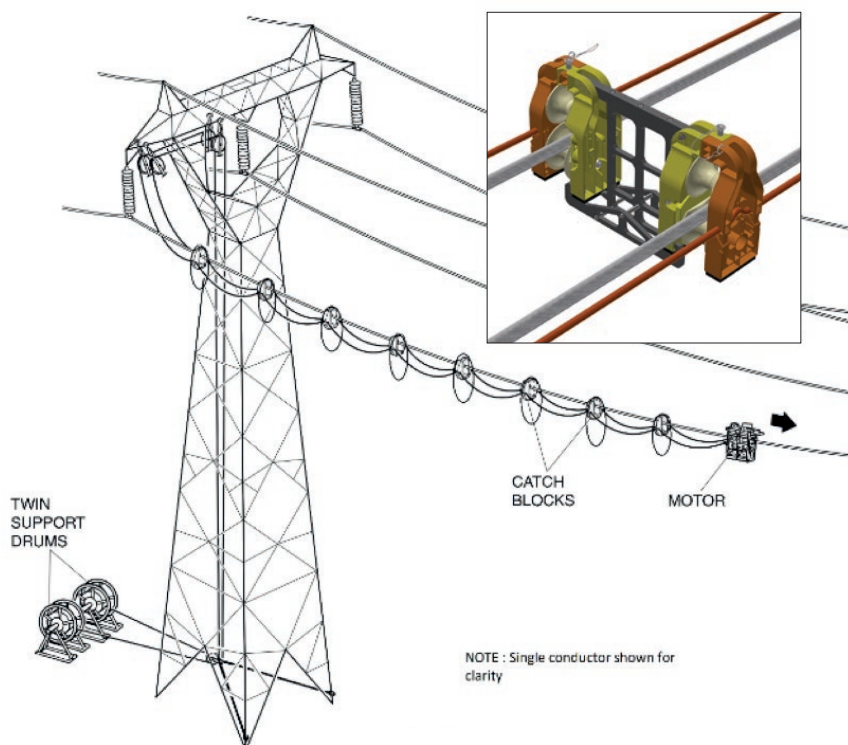


Figure 1: Catchblock unit suspended on the phase conductor

## DESCRIPTION/OPERATION (CONT.)

### UTILISATION

The Catchblock has been designed to capture the conductor during re-stringing operations during all pulling processes. In the event of a failure of the conductor ANY Catchblock that has the two exposed tails of conductor passing through the Catchblock roller shall be deemed unusable and set aside for disposal. If the tails are recovered in the process of bringing the ends of the conductors to the opposing towers, the remaining Catchblocks in the span shall be examined for any reason that may reduce the continued life of the Catchblock. These shall be returned to the supplier with the possibility of either replacing parts or a replacement assembly.

### INSTALLING THE CATCHBLOCK:

1. Remove chassis retaining pin on both Catchblocks.
2. Operate finger clasp and release chassis catch to open both CatchBlocks.
3. Place the Catchblocks over the top two conductors and close the frames.
4. Insert retaining pin.
5. Align marker on the orange rope and connect the orange rope into the side frame of the orange chassis.

## DESCRIPTION/OPERATION (CONT.)

### TECHNICAL DATA

Mechanical data	
Dimensions (length x width x height)	Approx. 40 x 30 x 13 cm
Weight	Approx. 6.5 kg
Materials	
Frame: CatchBlock	Nylon
Roller	Nylon
Connector	Aluminium
Stability	
Workload (WLL)	2kN
Minimum Breaking load (MBL)	6kN

### What is needed to make a complete CatchBlock system

2x ZSN7130; 1x ZSN09345; 2x WAM10584

## TRANSPORT

During transport, protect the CatchBlocks against mechanical damages. To this effect, use appropriate transport boxes and cushioning packaging material.

**ALL CATCHBLOCKS MUST BE TRANSPORTED IN A CLOSED POSITION WITH THE RETAINING PIN ENGAGED**



**Slingco America, Inc.**  
3100 Jonquil Drive SE, Smyrna,  
Georgia, 30080, USA  
TOLL FREE: 888 685 9478  
contact@slingco.com

**888-685-9478**

**slingco.com**

CatchBlock Twin Quad Manual: MAN13649 – RevA Date May 2026

**Slingco Limited**  
Gateway Business Park, New Hall Hey Road,  
Rawtenstall, BB4 6JG, England  
Tel: +44 [0]1706 855558  
contact@slingco.com

**+44 [0]1706 855558**

**Slingco Australia Pty. Ltd.**  
L9, 1 York Street, Sydney,  
NSW 2000, Australia  
Tel: +61 3 8840 6556  
contact@slingco.com

**+61 3 8840 6556**