



# Directional Drilling Swivels

Counter rotational forces caused by boring equipment



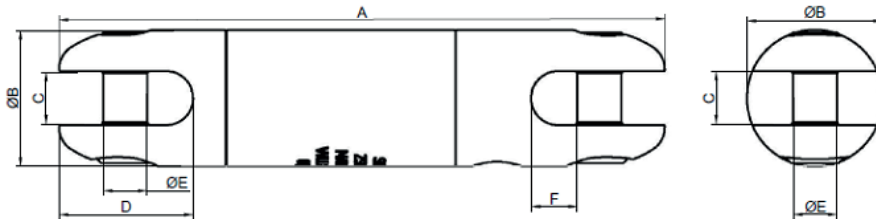
## DIRECTIONAL DRILLING SWIVELS



- ✓ Designed for horizontal directional drilling or underground cable installation only
- ✓ Able to be greased for removal of dirt and contaminants
- ✓ Made of carbon steel and zinc passivated for durability
- ✓ Use to counter rotational forces caused by boring equipment

Slingco Directional Drilling Swivels are designed to counter rotational forces caused by boring equipment used in underground pulling and drilling applications. Grease nipple included for removal of dirt and contaminants.

Made of carbon steel and zinc passivated for durability. Hex pins. Quality tested and inspected to ensure optimum reliability and performance.



Slingco Part No	Safe Working Load (3:1)		A		Ø B		C		D		Ø E		F	
	lb	kN	in	mm	in	mm	in	mm	in	mm	in	mm	in	mm
ZSW11133	8,500	37.8	7.24	183.8	1.62	41.2	0.63	16.0	1.60	40.6	0.53	13.4	0.55	13.9
ZSW11134	10,000	44.4	8.32	211.3	2.00	50.8	0.75	19.0	1.77	45.0	0.59	14.9	0.75	19.0



**Slingco Limited**

Gateway Business Park, New Hall Hey Road, Rawtenstall, BB4 6JG, England  
Tel: +44 [0]1706 855558 · contact@slingco.com

For any enquiries call or visit  
**+44 [0]1706 855558 | slingco.com**